



PERIOD  
HOMES



Primrose Hill  
Chelmsford CM1 2RH  
GUIDE PRICE: £375,000 - £400,000



## Primrose Hill, Chelmsford, CM1 2RH

GUIDE PRICE: £375,000 - £400,000

Welcome to this three-bedroom end terraced property, nestled within the heart of Chelmsford's City Centre and conveniently positioned just 0.4 miles away from the Mainline Railway Station. The shallow front garden has a welcoming brickwork and a rose bush. As you step inside this Victorian gem, you'll be captivated by its charm and character that this extended home offers. The lounge/diner welcomes you with two fireplaces, enhanced by mellow herringbone effect Amtico flooring. Throughout the property, you'll discover the allure of classic sash windows with shutters, allowing for an abundance of natural light to filter through. The well-appointed kitchen, with a pull-out larder and integrated dishwasher, offers seamless access to the garden through patio doors.

The principle bedroom, finished with fitted wardrobes and a striking fireplace, creates a tranquil retreat. The second and third bedrooms also offer practical storage solutions with their own storage cupboards, making the most of every inch of space. The well-appointed bathroom comprises of a panelled bath, shower cubicle, basin, WC and benefits from underfloor heating.

Beyond its charming interior, this property enjoys a delightful outdoor space. It has an ideal space for alfresco dining on the patio, plus a large lawn area. In addition, the garden offers side pedestrian access. To the front of the property, there is resident's permit parking.









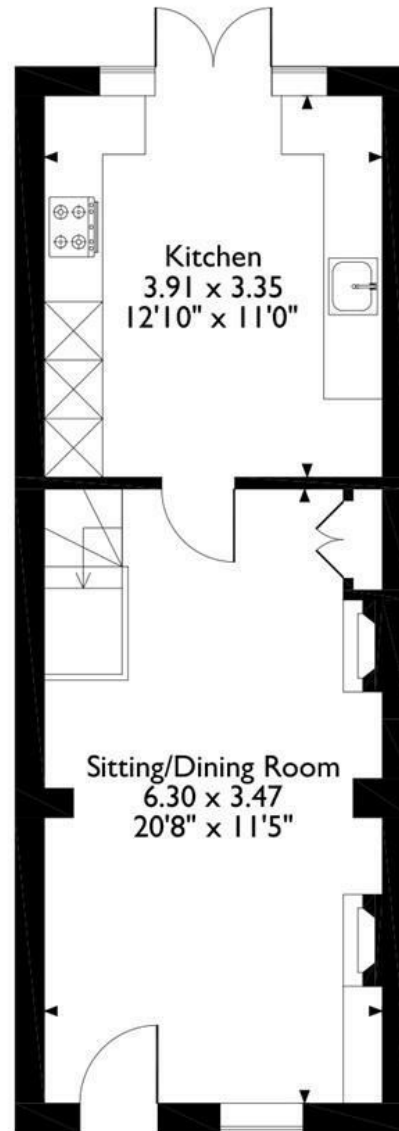




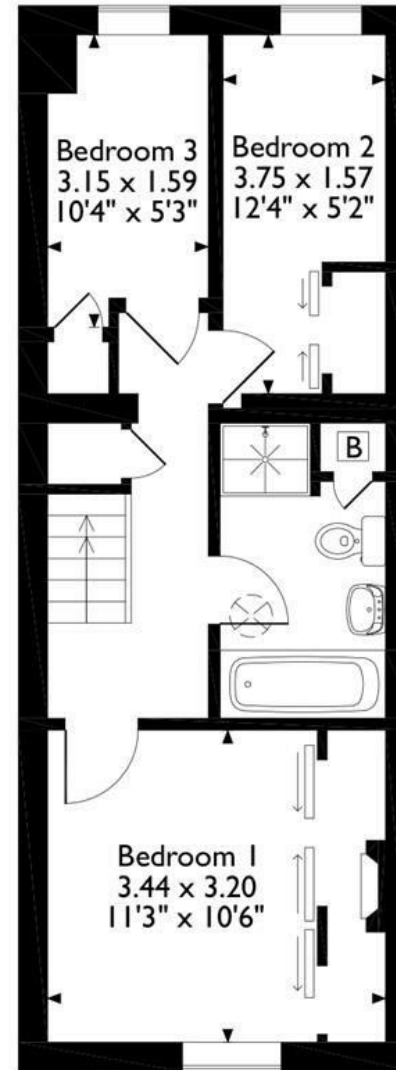




Primrose Hill, Chelmsford, Essex  
Approximate Gross Internal Area  
72 Sq M/776 Sq Ft



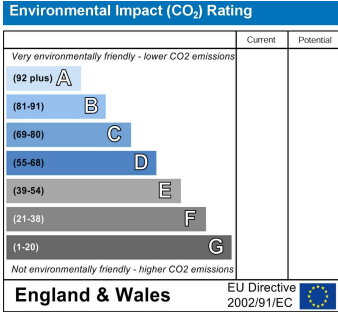
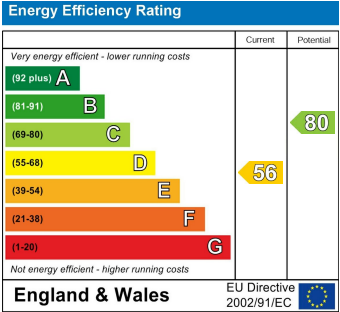
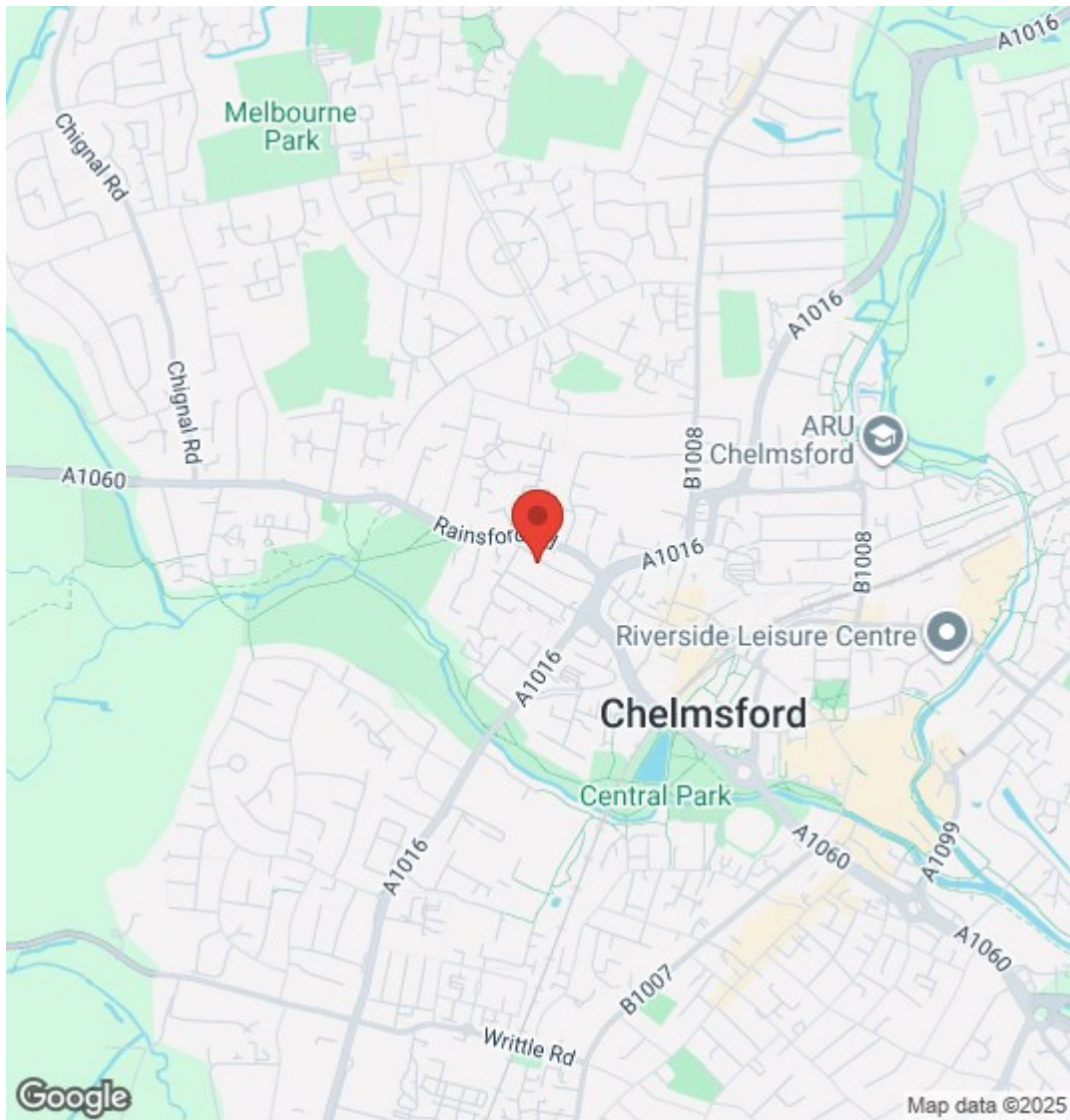
**Ground Floor**



**First Floor**

Please note that the location of doors, windows and other items are approximate and this floorplan is to be used for illustrative purposes only. Unauthorized reproduction is prohibited.





**PLEASE CALL 01277 288000 TO ARRANGE A VIEWING**  
**[www.periodhomes.co.uk](http://www.periodhomes.co.uk)**

**INDEPENDENT ESTATE AGENTS - VALUATIONS WITH NO OBLIGATION - PROFESSIONAL SERVICE**

These particulars do not constitute any part of an offer or contract. All measurements are given as a guide, no liability can be accepted for any errors arising therefrom. No responsibility is taken for any other error, omission, or mis-statement in these particulars. Period Homes, a trading style of Walkers Village and Country Homes Limited do not make or give, whether in these particulars, during negotiations or otherwise, any representation whatsoever in relation to this property.



